

www.bofoundation.org.hk

www.foodangel.org.hk

BO 小寶慈善基金
Charity Foundation

ANNUAL REPORT 2013-2014
年報

OFFICE

Address : Room 1604, Honour Industrial Centre,
6 Sun Yip Street, Chai Wan, Hong Kong
Tel : +852 2801 5333
Fax : +852 3747 1434
Email : info@foodangel.org.hk

辦公室

地址 : 香港柴灣新業街6號
安力工業中心16樓04室
電話 : +852 2801 5333
傳真 : +852 3747 1434
電郵 : info@foodangel.org.hk

KITCHEN (Hong Kong)

Address : Room 509, Honour Industrial Centre,
6 Sun Yip Street, Chai Wan, Hong Kong
Tel : +852 2898 2931
Fax : +852 3747 1434
Email : info@foodangel.org.hk

廚房 (香港)

地址 : 香港柴灣新業街6號
安力工業中心5樓09室
電話 : +852 2898 2931
傳真 : +852 3747 1434
電郵 : info@foodangel.org.hk

KITCHEN (Kowloon)

Address : G/F Fung Sing Building, 235 Hai Tan Street,
Sham Shui Po, Kowloon
Tel : +852 2801 5000
Fax : +852 3747 1434
Email : info@foodangel.org.hk

廚房 (九龍)

地址 : 九龍深水埗海壇街235號
豐盛大廈地下
電話 : +852 2801 5000
傳真 : +852 3747 1434
電郵 : info@foodangel.org.hk



Our Organization & Mission

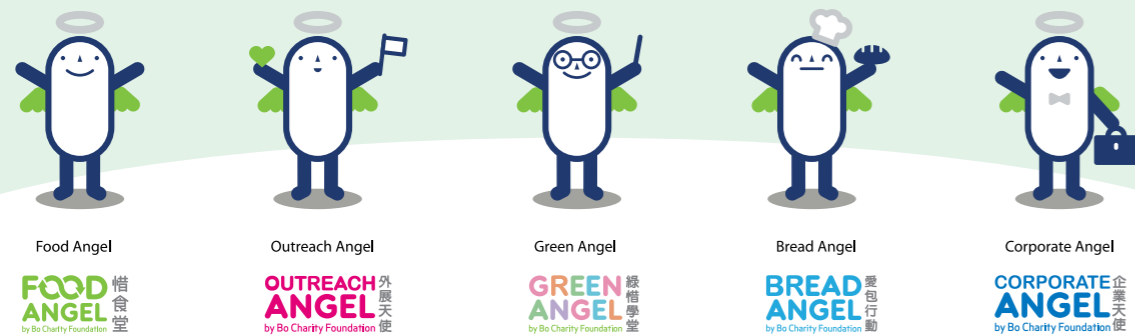
機構簡介及使命

Founded in 2009 as a registered charitable organization, Bo Charity Foundation has been dedicated to conserving the environment and caring for the underprivileged communities in Hong Kong.

We strive to accomplish our missions to help reduce food waste at the source, alleviate hunger and poverty, and educate the next generation through our food assistance program, central kitchens, food collection and delivery fleet, community outreach service, education program and volunteer team.

小寶慈善基金於2009年成立，為政府認可的慈善機構。我們致力協助社會上有需要的人士改善生活，並為保護環境出一分力。

我們透過食物援助計劃、中央廚房、食物回收及派送車隊、社區外展服務、教育項目及義工團隊，致力推行由源頭減少食物浪費，協助紓解飢餓及貧窮問題，並教育下一代珍惜資源及保護環境。



Message from the Chairman

主席的話

It is my privilege and honor to chair the Board of Directors of Bo Charity Foundation, the parent organization of Food Angel and a local-based charity dedicating itself to serving the underprivileged communities and the environment in Hong Kong.

The hidden issues of hunger and malnutrition among the local elderly and children, with 1 in 3 elderly struggle to meet the basic nutritional needs, 1 in 4 children do not go through a day with 3 proper meals, 16% poverty rate in Hong Kong, and the alarming quantities (3,600 tons per day) of food waste in the landfills, are all callings as well as challenges for all of us at Food Angel to do something for the betterment of our home city.

With the core mission of "Waste Not, Hunger Not", Food Angel is striving to rescue the edible surplus food from the local food industry and re-distribute the rescued food items to those in need in the forms of hot meals and food packs since its launch in 2011. Compared with last fiscal year, our hot meals services provided in 2013/2014 drastically increased by almost 8 times to 4,500 lunch boxes a day (from April 2014 onwards), and more than 500 tons of edible surplus food were rescued (over 400% increment in the total weight collected comparing to last fiscal year). The increase in service provided and food rescued is an encouragement to our dedications as well as an urge for us to be more determined in helping alleviate the disparity of resources distribution in Hong Kong.

By introducing new initiatives in 2013 like the new Green Angel Education Program, Outreach Angel Community Outreach Service, Bread Angel Volunteering Program and Corporate Angel CSR Program, our mission could be accomplished in a more comprehensive and penetrating manner. By engaging more people from different walks of life into our programs, we hope to broaden our service scope and generate more support to our services.

In the fourth quarter of 2014 we are planning the opening of our first Community Center in Shamshuipo and the up-scaling of the Chai Wan Central Kitchen. On behalf of the Board, I would like to thank all our donors, supporters and staff for their strong support of Food Angel. Together we will make Hong Kong a greener and more caring city that will benefit us all and our next generations.

Antony Leung
Chairman
Bo Charity Foundation

本人深感榮幸能擔任小寶慈善基金主席，透過「惜食堂」與其他本地慈善機構攜手為社會有需要人士改善生活，並為保護香港環境出一分力。

香港有超過一百萬人生活在貧窮線下，大部份是老弱人士及兒童，每三個長者便有一個長期營養不良，每四個小孩當中便有一個三餐不繼。但與此同時，本港每日有多達3,600噸廚餘被棄置到堆填區。這些社會問題，激勵「惜食堂」整個團隊立下決心，為香港做應有的貢獻。

「惜食堂」自2011年成立，以「停止浪費、解決飢餓」為宗旨，致力從本地飲食界回收仍可安全食用的剩餘食物，烹調成營養均衡的熱飯餐及製作成食物包，免費分派予社會上需要食物援助的人士。「惜食堂」現時每日生產熱飯餐4,500份，比去年增長了8倍。回收食物的總重量達到500多噸，較去年增加4倍。

除了推行「惜食堂」食物回收及援助計劃外，我們在2013年度開展了多個新項目，如「綠色學堂」教育計劃、「外展天使」社區外展服務、「愛包行動」義工計劃及「企業天使」企業社會責任計劃。我們希望透過這些項目，更全面及深入地推展及宣揚我們的使命，並讓不同界別人士參與，在拓展服務的同時，亦可獲社會更廣泛的支持。

我們將於2014年的第四季度，在深水埗開設首間社區中心，並計劃擴充柴灣中央廚房的生產規模。在此，本人謹代表全體董事局成員，衷心感謝所有捐贈者、支持者和工作團隊對「惜食堂」的支持。希望大家能同心協力為我們的下一代，將香港打造成一個更環保及更有關愛的城市。

梁錦松
小寶慈善基金主席

About Us 關於我們



Food Angel Food Rescue & Food Assistance Program 惜食堂食物回收及援助計劃

Board of Directors and Staff Team (as of March 2014)

董事局成員與工作團隊 (截至2014年3月)

Mr. Antony LEUNG Chairman	梁錦松先生 主席
Ms. Gigi TUNG Founder	董愛麗女士 創辦人
Mr. Michael CHENG Honorary Legal Advisor	鄭明哲先生 義務法律顧問
Ms. Kitty IP Director	葉潔馨女士 董事
Mr. Kaven LEUNG Director	梁偉文先生 董事
Mr. Kenny YIU Director	姚凱勤先生 董事
KPMG Honorary Auditor	畢馬威會計師事務所 義務核數師
Ms. Caribbean CHAN Chief Executive	陳妙瑜女士 行政總監
Executive Support (4)	行政支援 (4人)
Education Team (2)	教育團隊 (2人)
Kitchen Team (29)	廚房員工 (29人)
Outreach Team (13)	外展團隊 (13人)
Logistics Team (14)	物流團隊 (14人)



WASTE NOT, HUNGER NOT

Food Angel is a food rescue and food assistance program launched in 2011 by Bo Charity Foundation with the mission of "WASTE NOT, HUNGER NOT". The program rescues edible surplus food from the local food industry that would otherwise be disposed of as waste. Following a set of strict food safety protocols, the rescued food items will then be prepared into nutritious hot meals and food packs in our two central kitchens and be redistributed free of charge to serve the underprivileged communities in Hong Kong via our logistic team.

As of March 2014, the program has collected edible surplus food from over 80 food donation partners on a regular basis and has served 110 charitable organizations with 15,000 cumulative beneficiaries.

停止浪費 解決饑餓

「惜食堂」是小寶慈善基金於2011年開展的食物回收及援助計劃，宗旨為「停止浪費、解決飢餓」。惜食堂團隊致力向本地飲食界回收仍可安全食用之剩餘食物，通過嚴格的食物安檢程序，經兩所中央廚房製作成營養均衡的熱飯餐及食物包，最後由物流團隊免費派發給社會上需要食物援助的人士。

截至2014年3月，「惜食堂」食物回收及援助計劃已獲得80多個食物捐贈夥伴支持，受惠機構共110間，累積受惠人數達15,000人。



Food Angel Central Kitchens 惜食堂中央廚房

Important Figures 重要數據 1/4/2013 - 31/3/2014

Chai Wan Central Kitchen 柴灣中央廚房

- Operation started in July 2012
- Maximum production capacity per day :
 - 2,500 hot meals
 - 500 food packs
- 於2012年7月正式投入生產
- 每天最高生產量 :
 - 2,500份熱飯餐
 - 500份食物包



Food Angel Chai Wan Central Kitchen is sponsored by
The Community Chest of Hong Kong and Lee Hysan Foundation
惜食堂柴灣中央廚房由香港公益金及利希慎基金贊助

Sham Shui Po Central Kitchen 深水埗中央廚房

- Operation started in December 2013
- Maximum production capacity per day :
 - 3,500 hot meals
 - 1,000 food packs
- 於2013年12月正式投入生產
- 每天最高生產量 :
 - 3,500份熱飯餐
 - 1,000份食物包



Food Angel Sham Shui Po Central Kitchen is sponsored by
The Hong Kong Jockey Club Charities Trust
惜食堂深水埗中央廚房由香港賽馬會慈善信託基金贊助

Food Rescued (kg)
回收食物 (公斤)
562,080

Hot Meals Served
(boxes)
熱飯餐數量 (盒)
832,606

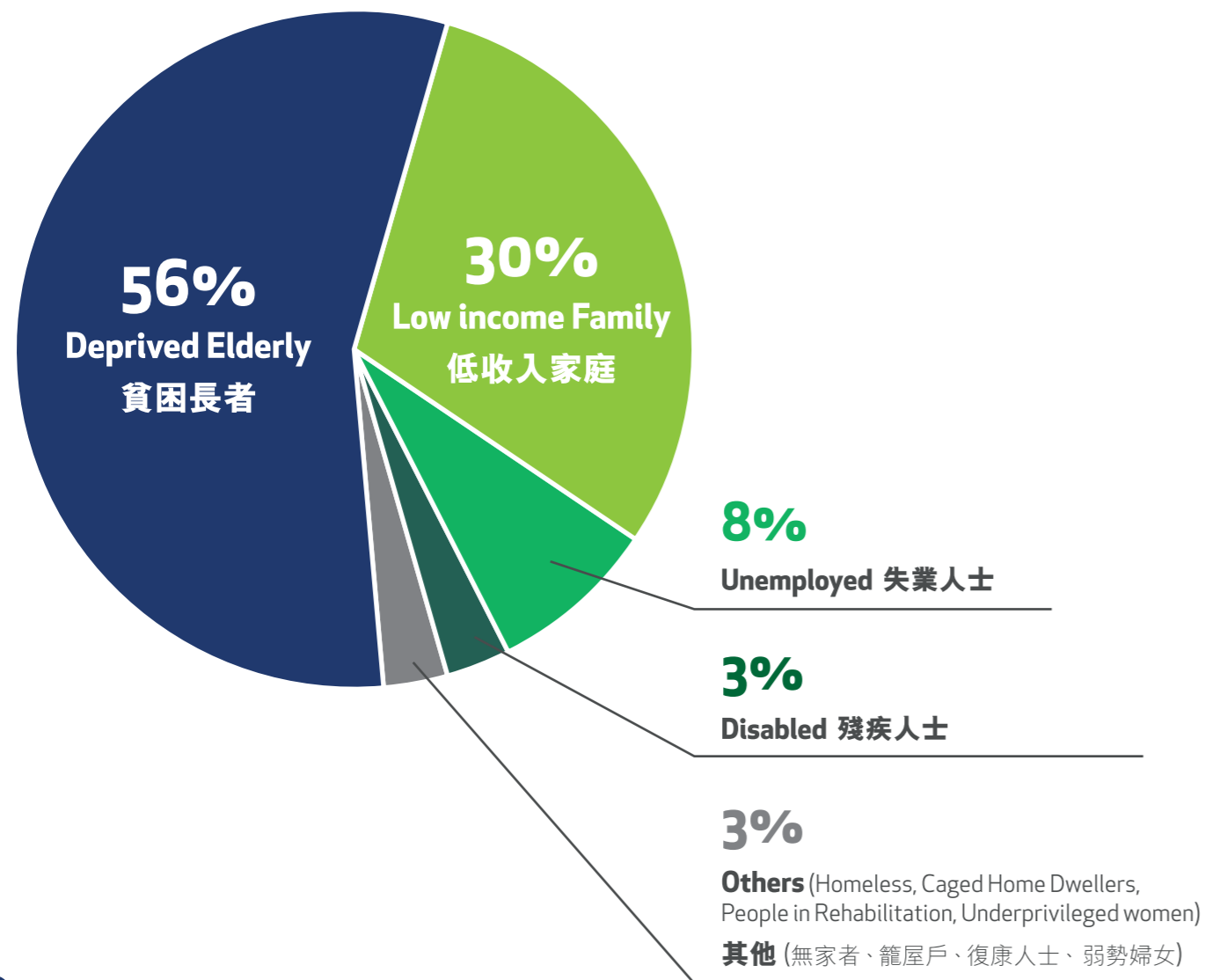
Non-Perishable Food Packs
Redistributed (kg)
食物包總重量 (公斤)
146,425

Cumulative Beneficiaries
累積受惠人數
15,000

Charity Partners
受惠機構
110

Food Donation
Partners
食物捐贈夥伴
81

Our Beneficiaries 我們的受惠者



Food Collection & Quality Control 食物回收及品質控制

Logistics Team 物流車隊



Our logistics team enlists three 5.5 tons cooling trucks and ten minivans for the collection of edible surplus food and distributions of hot meal boxes and food packs.

「惜食堂」物流車隊共有3輛5.5噸冷凍貨車及10輛輕型貨車，負責回收食物及派送熱飯餐與食物包。



Food Safety and Quality Control 食物安全及品質控制

Food Safety is always the ultimate concern of our operation : from food collection and screening to meal preparation and delivery; Food Angel team strives to make sure every step of the food-handling procedure is in compliance with the highest food safety standard.

In addition to following a set of strict Food Safety Protocols, our hot meals are sampled for laboratory test on a daily basis. As always, Food Angel is in effort to do our utmost for our beneficiaries' nutritional needs and well-being.

「惜食堂」十分重視食物安全，由回收、篩選、處理、烹調至運送食物的每一個程序，均做到一絲不苟。除了嚴格遵循一套食物安全程序外，亦每天為飯餐進行抽樣化驗，以確保所有飯餐皆符合最佳食用安全標準。





Green Angel - School Based Education Program 綠惜學堂 — 校本教育計劃

Green Angel is a comprehensive, academic year-long school based education program comprising an Introductory Talk, a Puppet Show, an Animation, Green Lessons, Food Up-cycling Workshops, Field Trips, an Inter-schools Competition and a Rewarding Scheme.

Since the launch in February 2013, over 30 local and international schools have participated in the program. More than 10,000 kindergartens and primary schools students have been inspired to cherish food and be more responsible for the environment.

「綠惜學堂」是一個多元化的學年制教育計劃，內容包括講座、手偶劇、動畫、食物再生工作坊、考察活動、聯校比賽及獎勵計劃。

計劃自2013年2月推出以來，已有30多間本地及國際學校參加，啟發超過10,000個幼稚園及小學學童實踐珍惜食物及愛護環境。

www.bofoundation.org.hk/greenangel



Green Angel Introductory Talk
「綠惜學堂」講座



Green Angel Lesson
「綠色學堂」課堂



Green Angel Food Up-Cycling Workshop
「綠色學堂」食物再生環保工作坊



Outreach Angel - Community Outreach Food Assistance Service 外展天使 — 社區外展食物援助服務



Launched in June 2013, "Outreach Angel" has been dedicated to delivering free nutritious hot meal boxes, non-perishable food packs and loving care to deprived elderly living in the Eastern district.

As of March 2014, "Outreach Angel" has been serving 75 households in need. Led by a well-experienced social worker, our outreach team provides home delivery services and regular home visits to the singleton, physically frail or disabled elderly five days a week. The regular visits help us to understand more of the special needs of our beneficiaries, and enable us to refer them to other service providers to further improve their quality of life.

開展於2013年6月的「外展天使」，致力為香港東區的貧困長者提供免費的營養熱飯餐和食物包，並送上關懷。

截至2014年3月，「外展天使」已為75戶有需要的長者提供服務。在經驗豐富的社工帶領下，「外展天使」團隊為獨居體弱、行動不便及有長期病患的長者提供每週五天的上門送飯及探訪服務，從而了解他們生活上的其他需要，並為他們進行服務轉介，以進一步改善他們的生活質素。





Bread Angel works hand in hand with volunteers and local bakeries to help reduce food waste at source and help those in need of food assistance. Bread Angel volunteers collect unsold bakery products from bakeries at their closing time and directly deliver them to beneficiary organizations for their next day consumption.

Since its launch in June 2013, Bread Angel has already rescued 24,644 baking items. 45 routings were all over Hong Kong for volunteers to sign up at their convenience. Together we hope to spread our love for those in need as well as help alleviate the food waste issues in Hong Kong.

www.bofoundation.org.hk/breadangel



「愛包行動」與義工及本地的麵包店攜手合作，在麵包店關店時收集未出售的新鮮麵包，並直接轉送到受惠機構，供受惠者翌日食用。

「愛包行動」自2013年6月開展以來，已拯救了24,644個麵包。我們在全港各區共設有45條收集麵包路線，以便義工登記參與。「愛包行動」希望集合大眾力量一起協助香港減少食物浪費，同時為有需要人士傳遞關愛。

Launched in April 2013, “Corporate Angel” offers a spectrum of CSR programs for corporate volunteers. The program aims at supporting Food Angel’s mission “Waste Not, Hunger Not” by engaging corporations to perform their corporate social responsibilities and raise fund for the Food Angel Food Rescue and Assistance Program.

於2013年4月推出的「企業天使」為商業機構提供不同類型的企業社會責任活動，透過義工活動一起實踐惜食堂「停止浪費、解決飢餓」的使命，鼓勵機構履行企業社會責任及為惜食堂食物回收及援助計劃籌款。



A Day with Food Angel
惜食體驗日



Share A Meal
惜食同餐



Food Up-Cycling Workshops
食物再生環保工作坊



Bake to Feed
烘焙教室



In November 2012, Bo Charity Foundation was granted the exclusive right to host Asia's first Canstruction® Hong Kong: a unique charity event originated in the United States in 1992 aiming at raising canned food for those in need and the public awareness of the issue of hunger through creativities.

In February 2014, a total of ten teams participated in the 2nd Canstruction® Hong Kong. 45,000 food cans were raised and redistributed to local food banks and our beneficiary organizations after a weeklong exhibition.

www.canstructionhk.org



小寶慈善基金於2012年11月獲授權在香港舉辦了首個亞洲區的「愛心罐香港」慈善活動。Canstruction®是一項於1992年源於美國的慈善活動，旨在為有需要的人士籌募罐頭食物，同時透過創意喚起公眾對饑餓問題的關注。

第二屆「愛心罐香港」於2014年2月舉行，十支參賽隊伍合共籌得45,000 罐罐頭食物，並於展覽後捐贈予本地食物銀行及其他慈善機構。



Media Coverage
傳媒報導

(1/4/2013 - 31/3/2014)



Community Events Highlights 社區活動

(1/4/2013 - 31/3/2014)



Our Heartfelt Gratitude for your Generous Support!

衷心感謝您們的慷慨支持!

(As of March 2014 截至2014年3月)

Food Donation Partners

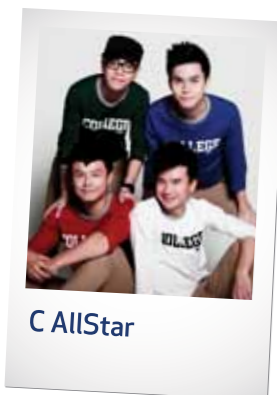
食物捐贈機構

(As of March 2014 截至2014年3月)

Sponsors 贊助機構

- | | | |
|---|---|--|
| 2013 Golfers Caring Action
2013 高球界關愛行動 | HOFEX
亞洲國際食品及飲料、酒店、餐廳及餐飲設備、供應及服務展覽會 | Second Time Around For A Good Cause |
| Ageas Insurance Company (Asia) Ltd.
富通保險(亞洲)有限公司 | Hong Kong Brands and Products Expo
工展會 | Speedy Group Corporation Ltd.
環速集團有限公司 |
| Airport Authority Hong Kong
香港機場管理局 | Ip Chi Shing Charitable Foundation Ltd.
葉志成慈善基金有限公司 | Sino Group - Olympian City
信和集團-奧海城 |
| Allianz Global Investors Hong Kong Ltd.
德盛安聯資產管理香港有限公司 | Jazzup | Star Industrial Co., Ltd.
星光實業有限公司 |
| Antalis (Hong Kong) Ltd.
近利(香港)有限公司 | Kaisa Group Holdings Ltd.
佳兆業控股集團有限公司 | T.L.N. Co., Ltd. |
| Artist Printing & Design Co., Ltd.
文藝印刷設計有限公司 | KPMG
畢馬威會計師事務所 | Tao Heung Holdings Ltd.
稻香控股有限公司 |
| C.C. Wu International Co., Ltd.
伍集成國際有限公司 | Lee Hysan Foundation
利希慎基金 | The British Chamber of
Commerce in Hong Kong
香港英商會 |
| CCS & Company, CPA
安德會計師行 | Link-Work Communications (HK) Ltd.
靈活聯繫(香港)有限公司 | The Community Chest of Hong Kong
香港公益金 |
| Chevalier Interational Holdings Ltd.
其士國際集團有限公司 | Lions Clubs International
District 303 HK & Macao, China
國際獅子總會中國港澳303區 | The Hong Kong Jockey Club Charities Trust
香港賽馬會慈善信託基金 |
| Communion W Ltd. | LUSH Asia Ltd. | U.S. Meat Export Federation
美國肉類出口協會 |
| DHL Hong Kong
DHL香港 | Maxim's MX
美心MX | Vibram® Hong Kong 100
Vibram® 香港100 |
| Dine with Hearts | Oasis of Hope BRT | Zonta Club Hong Kong II
香港崇德II社 |
| Ecolab Ltd.
藝康化工有限公司 | OpenRice
開飯喇 | |
| Foodscan Analytics Ltd.
食品檢測有限公司 | PARKnSHOP (HK) Ltd.
百佳超級市場(香港)有限公司 | |
| HKTDC Food Expo
香港貿易發展局美食博覽 | | |

Special Thanks 特別鳴謝



C AllStar



Mr. Dayo WONG
黃子華先生



Mr. Jacky CHEUNG
張學友先生



Mr. Julian CHEUNG
張智霖先生



Ms. Nancy SIT
薛家燕女士

Our heartfelt gratitude for their continuous support to the Food Angel Food Rescue and Assistance Program! Together we help reduce food waste at source and deliver our loving care to those in need of food assistance.

衷心感謝以下各機構慷慨捐出仍可食用的剩餘食物支持「惜食堂」食物回收及援助計劃! 攜手協助由源頭減少食物浪費及關懷社會上需要食物援助的人士。

- | | | |
|--|--|---|
| 85°C | G. Sushi
元綠壽司 | Pastry Global Food Service Ltd. - Les Vergers Boiron
嘉寶食品有限公司 - Les Vergers Boiron |
| A&W Food Service Ltd.
勁寶食品有限公司 | Gate Gourmet Hong Kong Ltd.
佳美航空膳食有限公司 | Raleigh Challenge Wilson Trail
雷利衛徑長征 |
| Agnès b. Café L.P.G. | Global Commerce Corporation Ltd.
高寶商業集團有限公司 | Royal Hong Kong Yacht Club
香港遊艇會 |
| AIA Group Limited
友邦保險控股有限公司 | Global Fine Foods Ltd.
高寶食品香港有限公司 | Sailing Boat Catering Management Ltd.
帆船飲食管理有限公司 |
| Allied Resources Trading Ltd.
樺泰貿易有限公司 | Goldrise Investment Ltd.
利揚投資有限公司 | Sims Trading Company Ltd.
慎昌有限公司 |
| Amoy Food Ltd.
淘化大同食品有限公司 | Grace Cup (HK) Co., Ltd.
康恩(香港)有限公司 | Sino Group of Hotels
信和集團旗下酒店 |
| Asia Pacific Catering Corp. Ltd. -
Luncheon Star
泛亞飲食有限公司 - 活力午餐 | Hong Kong Football Club
香港足球會 | Sinogain Food & Oil Ltd.
港基糧油食品有限公司 |
| AsiaWorld-Expo Management Ltd.
亞洲國際博覽館 | Holiday Inn Golden Mile Hong Kong
金域假日酒店(香港) | Super Star Group
鴻星集團 |
| Calfruits Co., Ltd.
加成鮮果有限公司 | Hong Kong Air Cargo Terminals Ltd.
香港空運貨站有限公司 | The Excelsior, Hong Kong
香港怡東酒店 |
| Cathay Pacific Airways Ltd.
國泰航空有限公司 | Hong Kong Convention and Exhibition Centre
香港會議展覽中心 | The Harbourview, Hong Kong
香港灣景國際 |
| Ceres Resources Ltd. | Hong Kong Sevens
香港國際七人欖球賽 | The Hong Kong Cricket Club
香港木球會 |
| Chan Kee Foods Ltd.
陳記食品有限公司 | Hotel ICON
唯港薈 | The Hong Kong Jockey Club
香港賽馬會 |
| China Resources Vanguard (HK) Co., Ltd.
華潤萬家(香港)有限公司 | Hung Fat Ho Food Ltd.
鴻發號糧油食品有限公司 | The Langham, Hong Kong
香港朗廷酒店 |
| Chuang Xin Vegetable & Fruit Ltd.
創新蔬果食品有限公司 | Hyatt Regency Hong Kong, Sha Tin
沙田凱悅酒店 | The Link Management Ltd.
領匯管理有限公司 |
| City Garden Hotel
城市花園酒店 | Impex Quality Products Ltd.
毓泰貿易(遠東)有限公司 | The Park Lane Hong Kong
柏寧酒店 |
| Cookies Quartet
曲奇四重奏 | IT Catering & Services Ltd.
美家餐飲服務有限公司 | The Peninsula Hong Kong
香港半島酒店 |
| Crowne Plaza Hong Kong
香港皇冠假日酒店 | Kateford International Ltd.
紀發國際有限公司 | The Royal Pacific Hotel & Towers
皇家太平洋酒店 |
| Dah Chong Hong Holdings Ltd.
大昌行集團有限公司 | KITEC
九龍灣國際展覽中心 | Triple O's HK |
| Danny Catering Service Ltd.
丹尼食品有限公司 | Langham Place Hotel Hong Kong
香港旺角朗豪酒店 | Unijoy Hong Kong Ltd.
合興香港有限公司 |
| Dayuhuan Trading Co., Ltd.
大宇寰進出口貿易股份有限公司 | MARS Foods Inc. | Vibram® Hong Kong 100
Vibram® 香港100 |
| Delicious Chef King Catering Ltd.
美味王餐飲管理有限公司 | Maxim's Caterers Ltd.
美心食品有限公司 | Vitaland Services Ltd.
維他天地服務有限公司 |
| Delifrance (HK) Ltd. | May's Cookies
一口曲奇 | W Cake |
| DKSH Hong Kong Ltd.
大昌華嘉香港有限公司 | Miramar Group
美麗華集團 | Wang On Group Ltd.
宏安集團有限公司 |
| Eaton, Hong Kong
香港逸東酒店 | Nine to Five Ltd.
九至五飲食有限公司 | Winning Tower Ltd.
運興泰有限公司 |
| eCosway Hong Kong
科士威(香港)有限公司 | Noah's Ark Hotel & Resort
挪亞方舟度假酒店 | Yamazaki Baking Co., Ltd.
香港山崎麵包有限公司 |
| Feeding Hong Kong
樂餉社 | Pacific Rich Resources (Hong Kong) Ltd.
豐裕泰有限公司 | Yummy Dim Sum Ltd.
一品點心有限公司 |
| Fiji Fish Ltd. | PARKnSHOP (HK) Ltd.
百佳超級市場(香港)有限公司 | |
| Four Seas Mercantile Holdings Ltd.
四洲集團有限公司 | | |

Charity Partners

受惠機構

(As of March 2014 截至2014年3月)

Action Care International Ltd.
關愛動員 (國際) 有限公司
Asbury Methodist Social Service
循道衛理亞斯理社會服務處
Assemblies of God West Point Church
神召會西環堂
C&MA Grace & Joy Church
基督教宣道會恩樂堂
Care The Visually Impaired
香港視障視全人仕協會
Caritas Elderly Centre - Sai Kung
明愛西貢長者中心
Caritas Labour Development Project
明愛職工發展計劃
Caritas Mutual Aid Centre For Single Parent Families
明愛單親家庭互助中心
Caritas Residents Mutual Help Centre – Sham Shui Po
明愛居民互助中心 - 深水埗
Caritas Women Development Prject
明愛婦女發展計劃
Chai Wan Area Kai-Fong Welfare Association
柴灣區街坊福利會
Chai Wan Baptist Church Social Service
柴灣浸信會社會服務處
Christian Action Chungking Mansions Service Centre
基督教勵行會 - 重慶大廈服務中心
Christian Concern For The Homeless Association
基督教關懷無家者協會
Christian Ebenezer Hall
基督教以便以謝堂
Christian Pun Shek Church
基督教磐石教會
Church Assembly hall (Christian Stewards)
Tree of Life Education Centre
生命樹教育中心
Church of Everlasting Love
基督教永愛教會
Crossroad Centre
阡陌中心
ELCHK Amazing Grace Lutheran Church
基督教香港信義會蒙恩堂
ELCHK, Tai Wo Integrated Youth Service Centre
基督教香港信義會太和青少年綜合服務中心
Eternity Love Foundation
藝恆愛心行動
Evangelical Free Church of China Tung Fook Chai Wan Church
中國基督教播道會同福堂
Evangelical Grace Church Of Jesus
耶穌恩典福音教會
Foundation Christian Church
基督教會立基堂
Giving Love
Giving Love Elderly Charitable Ltd.
獻愛長者慈善社有限公司
Grace Community Church
基督教主恩會
Happy Elderly Services Ltd.
樂在耆中慈善服務有限公司
Harmony Garden Lutheran Centre for the Elderly
路德會富欣花園長者中心
Helping Hand Siu Sai Wan Jockey Club Housing for the Elderly
伸手助人協會小西灣賽馬會老人之家
HK Christian Kun Sun Association (Female Hostel)
香港基督教更新會(女宿舍)
HK Christian Kun Sun Association (Male Hostel)
香港基督教更新會(男宿舍)
HKCMS Ko Chiu Road Ctr. Of Christ Love for the Aged
基督教培道聯愛會高超道仁愛敬老中心
HKMEA Cheng Yu Tung Social Centre for the Elderly
香港互勵會鄭裕彤敬老人中心
HKMEA Jane Shu Tsao Social Centre for the Elderly
香港互勵會曹舒菊英老人中心
HKSKH Lady MacLehose Centre
香港聖公會麥理浩夫人中心
Holy Carpenter Church Community Centre
聖公會聖匠堂社區中心

Hong Kong and Kowloon Kaifong Women's Association
Tsang Hui Yuk Wan Social Centre for the Elderly
港九街坊婦女會曾許玉環樂齡中心
Hong Kong Baptist Church Good Neighbour Chapel
香港浸信教會好鄰舍福音堂
Hong Kong Christian Mutual Improvement Society
Chuang Chung Wen Social Centre for the Elderly
香港基督教培道聯愛會-莊重文敬老中心
Hong Kong Christian Service Family Ties Integrated Family Service Centre
香港基督教服務處 - 家情綜合家庭服務中心
Hong Kong Christian Service
Fortune Neighborhood Elderly Centre
香港基督教服務處幸福長者鄰舍中心
Hong Kong Church Network for the Poor
教會關懷貧窮網絡
Hong Kong PHAB Association
Support Employment Service Centre
香港傷健協會輔助就業服務中心
Hong Kong Sheng Kung Hui Kowloon City Family Support Networking Service
香港聖公會九龍城家庭支援網絡服務
Hong Kong Sheng Kung Hui Welfare Council
Holy Nativity Church Ming Wah Centre
香港聖公會福利協會主誕堂明華活動中心
Hong Kong Society for the Protection of Children
香港保護兒童會
Hong Kong Tsz Kwong Bethel Church
香港伯特利教會慈光堂
Jabez Mission Church
雅比斯差傳教會
Jubilee Ministries
禧福協會
Kwai Chung New Life Temple
葵涌新生命堂
LCH Charitable Foundation
利駿行慈善基金
Lok Kwan Social Service
樂群社會服務處
Methodist Epworth Village Community Centre
Epworth Integrated Youth Team
循道愛華村服務中心社會福利部愛華青少年綜合服務隊
Methodist Epworth Village Community Centre
Epworth Neighbourhood Elderly Centre
循道愛華村服務中心社會福利部愛華耆樂中心
Methodist Epworth Village Community Centre
Hing Wah Neighbourhood Elderly Centre
循道愛華村服務中心社會福利部興華耆樂中心
Mission to New Arrivals Ltd.
新福事工協會
Missionaries of Charity
仁愛傳教修女會
Neighbourhood Care Foundation Ltd
睦鄰關愛基金
New Life Baptist Church
新生命浸信會
New Life Psychiatric Rehabilitation Association
新生精神康復會
People Service Centre
民社服務中心
Pok Oi Hospital Jockey Club Hostel For Single Persons
博愛醫院賽馬會單身人士宿舍
Project Concern Hong Kong
香港醫療援助會
San Po Kong Swatow Christian Church
基督教新蒲崗潮人生命堂
Shamshuipo KaiFong Welfare Association Primary School
深水埔街坊福利會小學
Shatin Baptist Church
沙田浸信會
Shatin Methodist Church
循道衛理聯合教會沙田堂
Shatin Women's Association
沙田婦女會
Shek Kip Mei Kai-Fong Welfare Association
石硤尾街坊福利會
Shek Kip Mei Mei Yu Estate Residence Association
石硤尾邨美映樓互助委員會

Society for Community Organization
香港社區組織協會
St. James' Settlement
聖雅各福群會
St. Luke's Church of United Brethren in Christ
基督教協基會路加堂
St. Stephen's Society
聖士提反會
The Boys' and Girls' Clubs Association of Hong Kong
Shaukeiwan Children Centre
香港小童群益會筲箕灣兒童中心及圖書館
The Christ's Evangelical Centre (Church of Love)
基督福音堂(主愛堂)
The Church of Livingstones Shek Lei
基督教會活石堂石梨堂
The Hong Kong Association of Senior Citizens
香港長者協會
The Hong Kong Chinese Church of Christ Chung Chun
Neighbourhood support center Praise Along
香港華人基督會頌真堂睦鄰中心(頌雅廊)
The Industrial Evangelistic Fellowship
工業福音團契
The Mental Health Association of Hong Kong
香港心理衛生會
The Pentecostal Holiness Church Hong Kong
Conference Gilead Social Service Centre
五旬節聖潔會香港區會基列社會服務中心
The Salvation Army Centraline Charity Fund School
救世軍中原慈善基金學校
The Salvation Army Hong Kong Island East Corps
救世軍港島東隊
The Salvation Army Integrated Service for Street Sleepers
救世軍露宿者綜合服務
The Salvation Army Yee On Hostel
救世軍怡安宿舍
The Wah Fu Swatow Christian Church
基督教華富邨潮人生命堂
Tokwawan Baptist Church
土瓜灣浸信會
Tsun Tsun Mission of Hong Kong Whampoa Church
基督教香港崇真會黃埔堂
Tung Wah Group of Hospitals Enhanced Home and Community Care Services (Eastern District)
東華三院改善家居及社區照顧服務(東區)
TWGHs Fong Wong Woon Tei Home for the Elderly
東華三院 方王煥婦安老院
TWGHs Ho Tung Home for the Elderly
東華三院 何東安老院
TWGHs Jockey Club Tin Shui Wai Integrated Services Centre
東華三院賽馬會天水圍綜合服務中心
TWGHs Jockey Club Yee On Care and Attention Home
東華三院 賽馬會頤安護理安老院
TWGHs Jockey Club Yee Yung Care and Attention Home
東華三院 賽馬會頤養護理安老院
TWGHs Lee See Ping Home for the Elderly
東華三院 馬李示聘安老院
TWGHs Ma Cheng Shuk Ying Home for the Elderly
東華三院 馬鄭淑英安老院
TWGHs Pao Siu Loong Care & Attention Home
東華三院 包兆龍護理安老院
TWGHs Po Chung Chuen Ying Home for the Elderly
東華三院 寶鍾全英安老院
TWGHs Tai Tung Pui Day Activity Centre for the Elderly
東華三院 戴東培日間活動中心暨宿舍
TWGHs Willow Lodge
東華三院 翠柳頤庭
TWGHs Wong Cho Tong Care & Attention Home
東華三院 黃祖棠護理安老院
TWGHs Yeung Sing Memorial Long Stay Care Home
東華三院 楊成紀念長期護理院
TWGHs Yu Chun Keung Memorial Care & Attention Home
東華三院 余振強紀念護理安老院
TWGHs Yu Mak Yuen Integrated Services Centre
東華三院余墨緣綜合服務中心
Windshield Charitable Foundation
宏施慈善基金
Women Service Association
婦女服務聯會

Financial Report

財務報告

(For the year ended 31 March 2014 截至2014年3月31日)

These figures are based on Bo Charity Foundation's financial accounts for the year ended 31 March 2014. The full audited financial statements by KPMG are available on our website, www.bofoundation.org.hk.

本財務報告摘自小寶慈善基金2014年3月31日的年度財務報告，該報告由畢馬威會計師事務所撰寫，完整的年度財務報告已上載至小寶慈善基金網頁 www.bofoundation.org.hk

Income & Expenditure 收入與支出

In Hong Kong Dollar 港幣

INCOME 收入

General Donation 一般捐款 \$9,049,113
- Public Donation 公眾捐款
- Corporate Donation 企業捐款
- Fundraising Events 籌款活動
- Kowloon Kitchen Setup Donation 九龍廚房設置捐款

Designated Donation 指定捐款 \$8,560,015

Bank Interest 銀行利息 \$27

TOTAL INCOME 總收入 \$17,609,155

EXPENDITURE 支出

Program Expenses 項目支出 \$8,911,624
- Food Angel Food Rescue & Assistance Program 「惜食堂」食物回收及援助計劃
- Green Angel Education Program 「綠緣學堂」教育計劃
- Outreach Angel Community Outreach Service 「外展天使」社區外展服務

Administrative Expenses 行政支出 \$1,370,619
- Executive Support 行政支援
- Fundraise & Marketing 籌款活動
- Other Expenses 其他支出

Bank Interest Expense 銀行利息支出 \$15

TOTAL EXPENDITURE 總支出 \$10,282,258

SURPLUS FOR THE YEAR 年度結餘 \$7,326,897

Financial Position 財務狀況

In Hong Kong Dollar 港幣

Non-current Assets 非流動資產 \$5,160,516
- Leasehold Improvements 租賃權益改良
- Fixture & Kitchen Equipment 固定裝置及廚房設備
- Motor Vehicles 物流車輛

Current Assets 流動資產 \$8,840,165
- Receivables, Prepayments & Deposits 其他應收賬款及預收款項
- Cash & Cash Equivalents 現金

Current Liabilities 流動負債 \$4,743,804

NET ASSETS 資產淨值 \$9,256,877